

The children and young people's emotional
wellbeing and mental health service

Mindworks Surrey Alliance Performance

M11 – February 2024

By Sam Luboff & Clare Shearn

Prepared on 15th March 2024

For Presentation at the April 2024 EFCQP



Demand & Activity - Learning Space

LSp Referrals YTD 2023/24 Total

Month YTD Total	YTD Contracted Target	YTD % Variance
502	314	60%

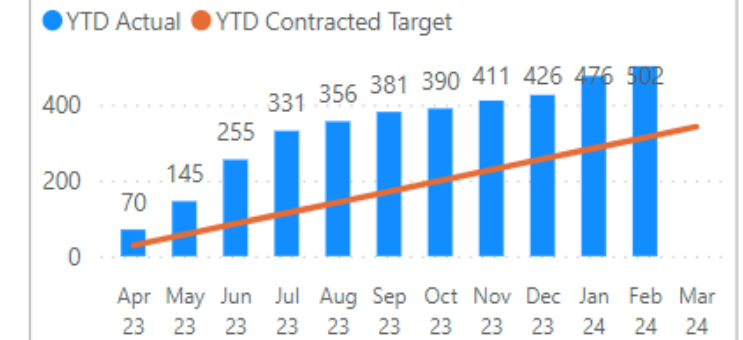
LSp Treatment YTD 2023/24 Total

Month YTD Total	YTD Contracted Target	YTD % Variance
3827	3082	24%

Referral

Referral	Apr 23	May 23	Jun 23	Jul 23	Aug 23	Sep 23	Oct 23	Nov 23	Dec 23	Jan 24	Feb 24	Mar 24	Total	Contracted	22/23 MonthAverage
AAT	27	38	67	50	21		4	12	9	27	13		268		30
CCT (now IIT)	16	11	13	7							3		50		17
Direct referrals		1	7	11	4	4	2	1	5	18	4		57		13
Internal referrals	9	10				21	2	8		5	5		60		0
Phone and Hub	18	15	23	8			1		1		1		67		0
LSP Total Referrals	70	75	110	76	25	25	9	21	15	50	26		502	314	59

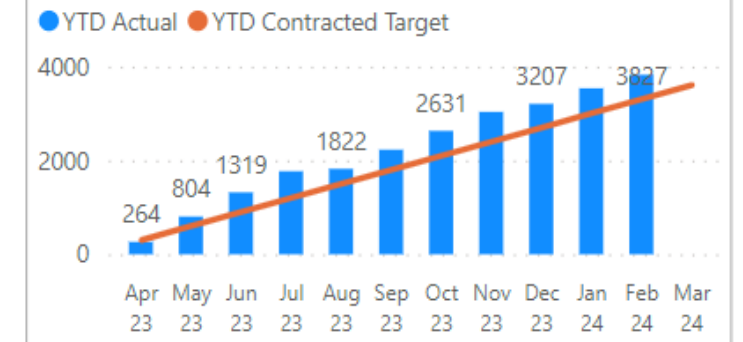
LSp Referral 2023/24



Neurodevelopment Activity by service

Activity	Apr 23	May 23	Jun 23	Jul 23	Aug 23	Sep 23	Oct 23	Nov 23	Dec 23	Jan 24	Feb 24	Mar 24	Total	Contracted	22/23 MonthAverage
Assessment-Individual Face to face-- Neurodevelopmental Assessment Service														222	0
Treatment-Group Face to face--Child	9	51	55	28		21	34	35	4	9	17		263	0	24
Treatment-Group Online-- Neurodevelopmental Service (teacher / parent - adult)	3	37	5	46		4	24	4		7			130	352	26
Treatment-Individual Face to face-- Neurodevelopmental Service	219	393	395	328		333	299	318	145	275	236		2941	2730	359
Treatment-Individual Phone / Skype / Other-- Neurodevelopmental Service	33	59	60	49	52	50	44	48	22	41	35		493	0	52
Treatment Total	264	540	515	451	52	408	401	405	171	332	288		3827	3082	460

LSp Treatment 2023/24



LSP - ND (LSP) Waits

EAST Surrey

Month ▲	Wait time (days)	Waiting List (No. CYPs)
April 2023	42	19
May 2023	29	45
June 2023	54	58
July 2023	48	53
August 2023	69	68
September 2023	65	52
October 2023	72	36
November 2023	72	18
December 2023	72	13
January 2024	55	28
February 2024	70	28

WEST Surrey

Month ▲	Wait time (days)	Waiting List (No. CYPs)
April 2023	202	35
May 2023	96	34
June 2023	96	51
July 2023	77	49
August 2023	98	59
September 2023	99	43
October 2023	108	19
November 2023	108	19
December 2023	108	25
January 2024	22	15
February 2024	23	7

*Wait time as at end of reporting month

LSP Key Messages

Overall

With the imminent termination of the Learning Space contract, it is proving rather difficult to fine tune the level of referrals that we can accept from SABP in the remaining few months of operation. Consequently, the referral rate slowed compared to the previous month although it was still higher than any month in the previous quarter. Once again, the majority of referrals have been for children and young people. Overall the situation is being monitored.

Referrals

- Demand has exceeded contracted levels at **502** referrals received YTD. M11 position YTD Variance **+60%**.
- The referrals total for February is 26 which is very slightly above half of the number of referrals that were taken in the previous month (50). Even so, the number is still above our historical monthly contracted total (20). As in the previous month, the majority were for CYP referrals (20) as opposed to parent/family referrals (6). The parent/family number is lower than previous months but still broadly in line with a trend of single figure monthly referrals. Of the 20 CYP referrals, the split was equal between those directed to our Group service offer and those that were directed to our 1-1 service offer.

Activity

- Activity is at **3,827**. YTD variance **+24%**.
- Total activity for the month was 288 interventions which given that February is a 'short' month was nearly comparable with the number of interventions carried out in the previous month (332). Both this month and the previous month show a considerable increase in activity compared to the end of calendar year 2023. Of the 288 interventions, the vast majority was accounted for by individual face-to-face sessions with CYP (236).

Waiting lists

- Across both our hub locations, waiting lists have stabilised. Specifically in the east of the county the level has remained the same and it has fallen by half in the west of the county. Overall, the total number on our waiting list this month is 35 as opposed to (43) last month. This level of waiting represents the lowest number of individuals on the list in the current financial year.

Waiting times

- The waiting time for commencement of service remains stable and low in the west of the county at 23 days. The waiting time figure in the east of the county has been distorted by a single outlying family who are waiting for a hospital procedure to first take place, and which was abruptly cancelled. The wait time in the east of the county has risen from 55 days to 70 days but, as stated, this is not generally representative. Wait times in the east of the county have remained at the same level for most of the current financial year.

Workforce/Staffing

- No changes to staffing levels were recorded in February.

Demand & Activity - Barnardos

Barnardo's Referrals YTD 2023/24 Total

Month YTD Total	YTD Contracted Target	YTD % Variance
1074	1100	-2%

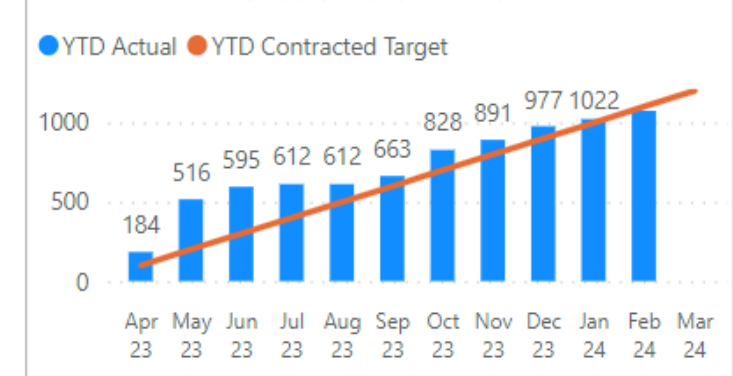
Barnardo's Treatment YTD 2023/24 Total

Month YTD Total	YTD Contracted Target	YTD % Variance
6492	6884	-6%

Referral

Referral source	Apr 23	May 23	Jun 23	Jul 23	Aug 23	Sep 23	Oct 23	Nov 23	Dec 23	Jan 24	Feb 24	Mar 24	Total	Contracted	22/23 MonthAverage
AAT	164	329	15			3	31		1	10			553		
Direct referrals	18	2				33	123	61	81	32	22		372		
Self-referrals	2	1	64	17		15	11	2	4	3	30		149		
Barnardo's Total Referral	184	332	79	17		51	165	63	86	45	52		1074	1100	206

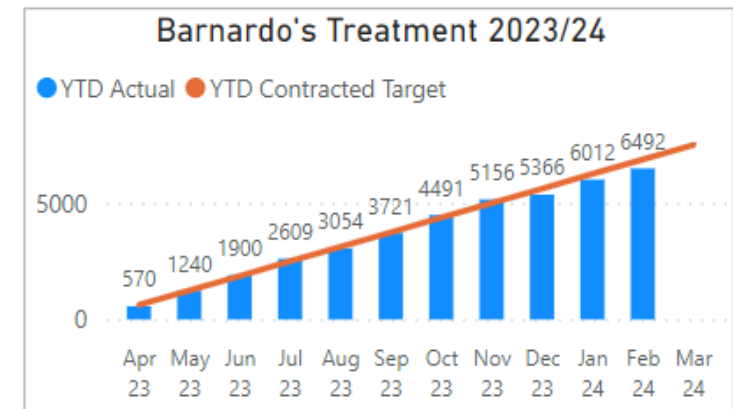
Barnardo's Referral 2023/24



Neurodevelopment Activity by service

Activity	Apr 23	May 23	Jun 23	Jul 23	Aug 23	Sep 23	Oct 23	Nov 23	Dec 23	Jan 24	Feb 24	Mar 24	Total	Contracted	22/23 MonthAverage
Treatment-Individual Face to face--ADHD 1:1 service	6	17	18										41	2475	165
Treatment-Group Face to face--Barnardo's SPPS 6-18 Parenting	476	545	395	537	445	457	560	357	106	312	232		4422	4263	380
Treatment-Group Face to face--Barnardo's Celebrating Children who do it differently	88	108	247	172		210	210	308	104	334	248		2029	147	10
Treatment Total	570	670	660	709	445	667	770	665	210	646	480		6492	6884	555
Treatment-Individual Phone / Skype / Other--Out of hours line	38	31	38	19	19	26	32	33	21	33	20		310	0	0

Barnardo's Treatment 2023/24



Barnardo's Waits

Barnardo's	Apr-23	May-23	Jun-23	Jul-23	Aug-23	Sep-23	Oct-23	Nov-23	Dec-23	Jan-24	Feb-24
Waiting Lists	0	109	0	0	0	6	0	0	37	2	17
Total number of referrals waiting (Caseload)	634	588	616	530	473	235	274	287	352	314	383
Total number of referrals waiting (Celebrating and inspiring school work)	0	364	42	54	43	20	12	18	27	29	45

Waiting Times											
From 1st contact to waiting for a course (SPSS) - Group	301	109	80	0	0	18	50	23	38	23	22
Number of referrals waiting 0-30 working days	15	26	11	0	0	6	36	0	37	6	10
Number of referrals waiting 30-60 working days	0	4	0	0	0	12	11	18	1	13	7
Number of referrals waiting 60-90 working days	1	0	4	0	0	0	3	5	0	4	2
Number of referrals waiting more than 90 working days	285	79	65	0	0	0	0	0	0	0	3
From 1st contact to waiting for Celebrating Children who do it differently - Group	311	459	520	530	473	217	224	264	314	291	361
Number of referrals waiting 0-30 working days	15	40	43	52	47	20	36	12	27	34	54
Number of referrals waiting 30-60 working days	55	14	40	45	62	32	25	18	33	42	41
Number of referrals waiting 60-90 working days	3	41	14	36	43	47	39	47	51	61	64
Number of referrals waiting more than 90 working days	238	364	423	397	321	118	124	187	203	154	202
From 1st contact to ADHD 1:1 session - Individual	22	20	16	0	0	0	0	0	0	0	0
Number of referrals waiting 0-30 working days	5	5	0	0	0	0	0	0	0	0	0
Number of referrals waiting 30-60 working days	8	3	5	0	0	0	0	0	0	0	0
Number of referrals waiting 60-90 working days	6	10	4	0	0	0	0	0	0	0	0
Number of referrals waiting more than 90 working days	3	2	7	0	0	0	0	0	0	0	0



Barnardos Key Messages

Referrals

- Demand is below contracted levels at **1,074** referrals received YTD. M11 position YTD Variance **-2%**.
- **SPPS** - on 1st February Surrey Positive Parenting opened for referrals after a year of being closed. We have shared this news across the Mindworks Alliance. We have had a slow intake of referrals. This has been due to ongoing conversations with AAT and the use of their referral forms. The referrals from SPOKE team has also slowed. You have very minimal amount of referrals from other Mindworks organisations/professionals. We know the demand is there but we are not seeing the referrals come through.
- **Celebrating** - Demand is still high, wait list is still long, and schools have reached out to ask for us to do coffee mornings. The capacity of the Celebrating team is stretched so the Surrey Positive Parenting team have taken on the coffee mornings for some schools. We are seeing a higher number of secondary schools refer in which is good as news is spreading that we are open for both primary and secondary groups.
- **O Helpline** - Our number of calls has been lower in Feb but this is an expected trend with having Feb half term. We often see a decrease in calls during school holidays, there could be many factors but we suggest this is due to families going on holidays, clubs that children attend like football camps might limit stressful situations as the young person is doing something they enjoy, we see a lot of young people staying with other members of the extended family such as grandparents or friends whilst caregivers still work. We are hopeful for an increase in calls in March as we've focussed on advertising throughout the latter part of Feb.

Activity

- Activity is at **6,492**. YTD variance **-6%**.
- **SPPS** - In February we received 35 referrals which included 22 SPOKE, 12 Referrals ND - Direct Request for Support (non - AAT) incl community teams & GP, 1 self-referral. Of these 2 SPOKE referrals and 7 Referrals ND - Direct Request for Support (non - AAT) incl community teams & GP were rejected. In February we offered 462 session, 232 were accepted 230 sessions were declined. Due to the low number of referrals received we were unable to fill all spaces. In February have delivered 3 Post diagnosis groups, 5 Pre diagnosis groups and 1 co-delivery group with NAS and 3 one-to-one sessions each week.
- Consultations with parents outside of a group
- Telephone - 26
- Email -126 Meaningful information sharing with social workers, family support workers, ND team, CSPA
- Telephone conversations - 1
- Email - 3

Barnardos Key Messages

Waiting lists and waiting times-

- **SPPS** - waiting list lower than usual as we have a high number of empty spaces due to a low number of referrals coming in. Celebrating - high waiting list, schools are now booking for Feb 2025 onwards. – The waiting list is lower than usual as we have a high number of empty spaces due to a low number of referrals coming in. Celebrating - high waiting list, schools are now booking for Feb 2025 onwards.

Workforce/Staffing

- **SPPS** - staffing is currently on a full team. We have one member on sick leave.
- **Celebrating** - We are currently a full team. We have received a resignation, one colleague will leave at the end of May. Her resignation stems from how fast-paced the team have to work to meet contracted numbers, this is hard when we have a high number of schools cancelling sessions and children off school meaning our numbers are lower than we'd often like or plan for. The colleague also mentioned capacity for admin time is so stretched. We have another colleague who is reducing their hours at the end of May. This means we are open to a restructure of staff come May. This will allow for another part-time colleague to assist with the running of the groups out in schools. We are also keen to use volunteers within the Celebrating Service in the future.
- **Out of Hours Helpline** - Full staff team but one colleague is on a period of leave. They should return in April.

Highlights (what went well this month)

- Some written feedback from parents who have attended our Surrey Positive Parenting Courses.
- 'I just wanted to say thank you for a brilliantly run course. You made the content interesting and insightful while building a really trusting forum for the parents to share without fear. I am on a similar course for another ND condition and they haven't managed to facilitate that trust and therefore the experience has been very different
- 'Thank you for all of your support and information. You have certainly helped in showing me what I have been doing wrong and given me ideas for approaching things differently
- 'Thank you so much. It has been an incredible course and I have to say that I was sceptical at the beginning.'
- 'It has been fabulous. I've learnt an awful lot.'
- 'Just being with parents and people who understand has been such a pleasure.'
- 'The entire team were fantastic so incredibly supportive and professional. The course was well-organised and informative.
- Another highlight for us is the increase in the requests for coffee mornings from Surrey schools. This is providing a great touch point between the school staff, the families and our teams. We have gone into schools that have been seen by our celebrating team and the Positive Parenting team have offered a high-level introduction to the positive parenting course. During these opportunities we have highlighted how it is not a 'parenting course' but a skills-building course and lots of attendees have appreciated this information due to the connotations around parenting courses.

Lowlights/concerns

- Slow referrals are making booking families onto our April courses hard. We will be starting our courses in April with low numbers which is a shame as we know the demand is there.

Demand & Activity - NAS

NAS Referrals YTD 2023/24 Total

Month YTD Total	YTD Contracted Target	YTD % Variance
2818	578	388%

NAS Treatment YTD 2023/24 Total

Month YTD Total	YTD Contracted Target	YTD % Variance
12639	3878	226%

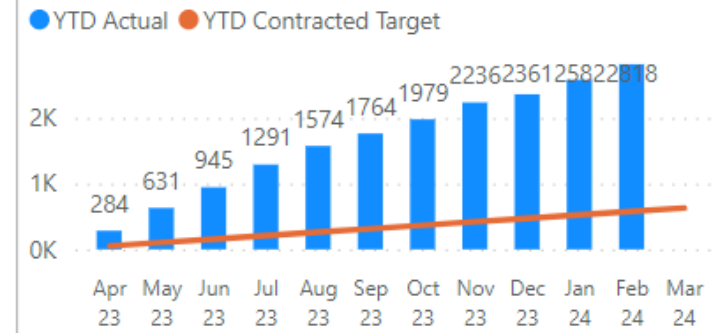
Referral

Referral source	Apr 23	May 23	Jun 23	Jul 23	Aug 23	Sep 23	Oct 23	Nov 23	Dec 23	Jan 24	Feb 24	Mar 24	Total	Contracted	22/23 MonthAverage
AAT	188	220	199	174	126	91	61	95	45	87	116		1402		141
Direct referrals	69	55	71	104	37	58	81	90	48	35	102		750		0
Spoke and Hub	27	72	44	68	120	41	73	72	32	99	18		666		2
NAS Total Referral	284	347	314	346	283	190	215	257	125	221	236		2818	578	143

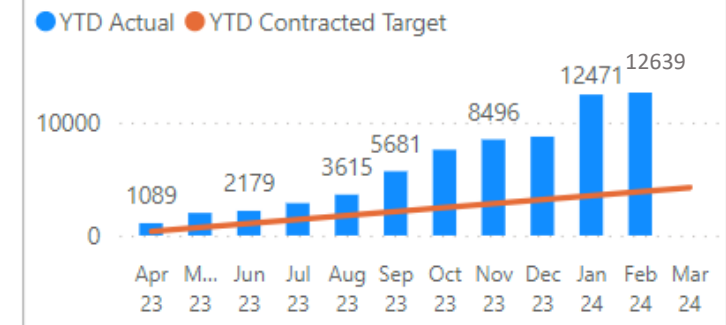
Neurodevelopment Activity by service

Activity	Apr 23	May 23	Jun 23	Jul 23	Aug 23	Sep 23	Oct 23	Nov 23	Dec 23	Jan 24	Feb 24	Mar 24	Total	Contracted	22/23 MonthAverage
Treatment/Intervention-Group Virtual/Facetoface--Neurodevelopmental Service (parent & carer courses)	1040	824	120	616	720	2010	1844	846	212	3636	74		11942	3520	401
Treatment/Intervention-Individual Virtual/Facetoface--Neurodevelopmental Service (Parent & Carer 1:1)	49	80	66	64	36	56	66	59	38	89	94		697	358	35
Treatment Total	1089	904	186	680	756	2066	1910	905	250	3725	168		12639	3878	436
Treatment/Intervention-Individual Facetoface--Neurodevelopmental Service (CYP 1:1)	21	35	44	45	22	55	53	77	11	34	62		459	0	6
Treatment/Intervention-Individual Phone / Skype / Other--Neurodevelopmental Service (Out of hours advice line)	20	27	15	18	17	24	31	23	11	21	25		232	0	0

NAS Referral 2023/24



NAS Treatment 2023/24



NAS Waits

NAS Wait List	Apr 23	May 23	Jun 23	Jul 23	Aug 23	Sep 23	Oct 23	Nov 23	Dec 23	Jan 24	Feb 24
Total number of referrals waiting (CYP 1:1)	0	4	9	3	11	5	1	12	8	9	23
Total number of referrals waiting (Parent & Carer 1:1)	11	5	17	11	16	33	7	17	14	13	19
Total number of referrals waiting (Parent & Carer courses)		36	54	334	419	362	352	355	320	414	458

Waiting Times	Apr 23	May 23	Jun 23	Jul 23	Aug 23	Sep 23	Oct 23	Nov 23	Dec 23	Jan 24	Feb 24
From 1st contact to 1:1 CYP Direct work	8	4	9	10	11	7	11	21	8	9	23
Number of referrals waiting 0-30 working days	0	4	4	7	0	2	11	9	6	5	22
Number of referrals waiting 30-60 working days	8	0	5	3	11	5	0	12	2	4	1
Number of referrals waiting 60-90 working days	0	0	0	0	0	0	0	0	0	0	0
Number of referrals waiting more than 90 working days	0	0	0	0	0	0	0	0	0	0	0
From 1st contact to waiting for 1:1 Parent / Carer	7	5	17	19	26	36	20	17	16	13	19
Number of referrals waiting 0-30 working days	7	4	5	8	10	0	13	1	1	5	3
Number of referrals waiting 30-60 working days	0	1	12	11	16	36	7	16	15	8	16
Number of referrals waiting 60-90 working days	0	0	0	0	0	0	0	0	0	0	0
Number of referrals waiting more than 90 working days	0	0	0	0	0	0	0	0	0	0	0
From 1st contact to waiting for Parent / Carer Courses	49	36	54	50	48	51	70	79	35	95	84
Number of referrals waiting 0-30 working days	7	1	1	1	18	21	43	30	18	74	10
Number of referrals waiting 30-60 working days	8	1	0	48	22	30	16	36	17	18	23
Number of referrals waiting 60-90 working days	30	10	31	1	8	0	11	13	0	3	46
Number of referrals waiting more than 90 working days	4	24	22	0	0	0	0	0	0	0	5
Referral to assessment	281	345	314	346	283	189	215	257	125	221	236
Number of referrals waiting 0-30 working days	281	345	314	346	282	189	215	257	125	221	223
Number of referrals waiting 30-60 working days	0	0	0	0	1	0	0	0	0	0	13
Number of referrals waiting 60-90 working days	0	0	0	0	0	0	0	0	0	0	0
Number of referrals waiting more than 90 working days	0	0	0	0	0	0	0	0	0	0	0
Total	345	390	394	425	368	283	316	374	184	338	362



NAS Key Messages

Demand

- Demand has exceeded contracted levels at **2,818** referrals received YTD. M11 position YTD Variance + **388%**
- Direct referrals are increasing from schools, family centres and self-referrals reflecting NAS activity to raise awareness of our service in the community and schools (information sessions, attendance at networking & community events & school training) and the suspension of Spoke pathway. CYP Direct Work referrals have increased quickly but we have now paused referrals for this 6-week intervention because our contract ends March 31st for this work.

Activity

- Activity has exceeded the target of **12,639**. YTD variance +**226%**
- No new 8-week Stepping Up courses starting this month, but January programmes are continuing through Feb. We have been able to deliver higher activity in parent 1:1 support using additional workshop contract staff and expanding functional roles where possible in order to maximise capacity. CYP 1:1 work remained stable.

Waiting lists

- Waiting lists remain stable. We continue to direct P/C 1:1 waitlists to support via specialist workshops, out-of-hours advice live and other signposting while they wait. The CYP waitlist has increased due to a higher number of referrals in February.

Workforce/staffing

- We have one remaining part-time Family Support Co-ordinator post to fill but have not had suitable applicants. The CYP 1:1 practitioner has resigned, but their end date will coincide with the contract ending on 31st March so we will not advertise this post. The remaining CYP 1:1 wait list will need to be managed within the team.

Highlights (what went well this month)

- We have scheduled our first evening 'in-person' Stepping Up 8-week workshop as a trial and are confident this will deliver accessible support for people who work full-time but prefer in-person events. We have added an additional specialist workshop to our portfolio on EBSNA reflecting a growing need in the families we support. We now have specialist workshops on PDA, Autism in Girls, Anxiety, Teens, Transitions, Sleep, Toileting, Carer Wellbeing and workshops specifically for male carers and Grandparents.

Demand & Activity - SWP

EIS (SWP) Referrals YTD 2023/24 Total

Month YTD Total	YTD Contracted Target	YTD % Variance
8876	8513	4%

EIS (SWP) Treatment YTD 2023/24 Total

Month YTD Total	YTD Contracted Target	YTD % Variance
64448	57033	13%

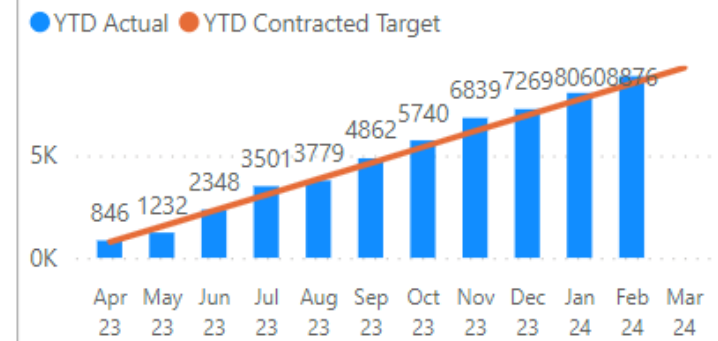
Referral

Referral source	Apr 23	May 23	Jun 23	Jul 23	Aug 23	Sep 23	Oct 23	Nov 23	Dec 23	Jan 24	Feb 24	Mar 24	Total	Contracted	22/23 MonthAverage
AAT	405	66	240	248	188	219	188	253	208	238	313		2566		
Community CAMHS	54	27	24	24	11	14	24	19	14	16	13		240		
Direct referrals	387	293	852	881	79	850	666	827	208	537	490		6070		
EIS (SWP) Total Referral	846	386	1116	1153	278	1083	878	1099	430	791	816		8876	8513	732

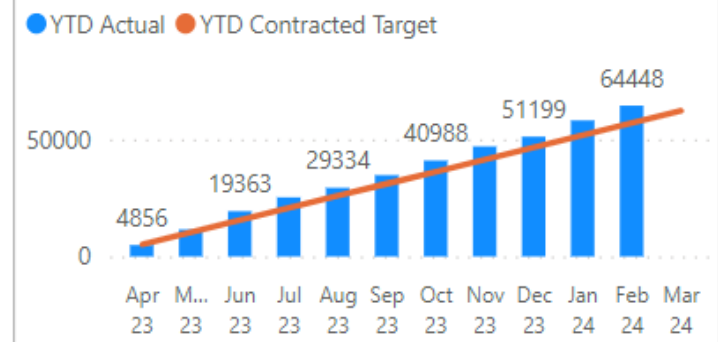
Neurodevelopment Activity by service

Activity	Apr 23	May 23	Jun 23	Jul 23	Aug 23	Sep 23	Oct 23	Nov 23	Dec 23	Jan 24	Feb 24	Mar 24	Total	Contracted	22/23 MonthAverage
Treatment-Group --Early Intervention Service	1105	1435	2577	1461	927	1277	1402	2051	827	1930	1453		16445	8155	1083
Treatment-Individual Face to face--Early Intervention Service	3751	5262	5233	4441	3142	4142	4833	3993	3340	5013	4853		48003	15281	0
Treatments-Group --Community CAMHS														642	1083
Treatments-Group --Crisis														5	0
Treatments-Individual Face to face--Community CAMHS														16691	1789
Treatments-Individual Face to face--Crisis														275	53
Treatments-Individual phone/skype/other--Community CAMHS														8345	0
Treatments-Individual phone/skype/other--Early Intervention Service														7640	0
Treatment Total	4856	6697	7810	5902	4069	5419	6235	6044	4167	6943	6306		64448	57033	4008

EIS (SWP) Referral 2023/24



EIS (SWP) Treatment 2023/24



SWP Waits

EIS(SWP) Wait List	Apr 23	May 23	Jun 23	Jul 23	Aug 23	Sep 23	Oct 23	Nov 23	Dec 23	Jan 24	Feb 24
Total number of referrals waiting	634	892	630	590	521	494	423	405	448	416	417

Waiting Times	Apr 23	May 23	Jun 23	Jul 23	Aug 23	Sep 23	Oct 23	Nov 23	Dec 23	Jan 24	Feb 24
Assessment	601	854	571	590	503	494	423	405	448	416	417
Number of referrals waiting 0-20 working days	82	149	111	167	115	119	108	108	142	141	140
Number of referrals waiting 20-80 working days	216	305	175	181	245	213	220	218	229	180	167
Number of referrals waiting more than 80 working days	303	400	285	242	143	162	95	79	77	95	110
Treatment	33	38	63	30	18	0	0	0	0	0	0
Number of referrals waiting 0-20 working days	13	13	13	0	18	0	0	0	0	0	0
Number of referrals waiting 20-80 working days	20	25	50	30	0	0	0	0	0	0	0
Number of referrals waiting more than 80 working days	0	0	0	0	0	0	0	0	0	0	0
Total	634	892	634	620	521	494	423	405	448	416	417

SWP Key Messages

Referrals

- Demand is below contracted levels at **8,876** referrals received. M11 position YTD Variance **+4%**.
- Seasonality: SWP continues to deliver to its seasonal expectations, with an increase in both referrals and interventions and activities.
- A&AT work: Ongoing macro-meso-micro challenges are being experienced within the system, and this is having an impact on referrals and referral flow. There is also a risky narrative developing that indicates that all 600 CYP on the routine partner waiting list are being held by SWP practitioners, this is not the case. It is more helpful to think of these CYPs waiting in the routine partner list as “awaiting Mindworks allocation”

Activity

- Activity is at **64,448**. YTD variance **+13%**.
- As expected, activity has followed seasonally expected variations. It is also essential to highlight the incredible services offered under the "Thriving" needs based category, with a total of 14621 opportunities for engagement offered and a total of 137500 thrive-like sessions/activities. The significant increase is due to a focus on the "thrive" like nature of some of our partners offer, which while funded by the Alliance, has not been previously reported.

Waiting lists

- Total number of referrals waiting - the total count across 13 partners for CYP not yet receiving a service. this number continues to decrease and there have been positive steps taken to move CYP waiting times to a more acceptable level. This is ongoing work. SWP is in the process of setting up a working group with partners to better understand and help resolve waiting list challenges within the partnership
- Prepare for waiters over 80 days: the process within the SWP partnership is for individual charities to perform check in/check-up phone calls with their longest waiters to monitor risk and escalation.

CYP Neurodevelopment Service

Progress update

14th March 2024

CYPs ND BCP Pathway 14th March 24

Spoke		Hub: Diagnostic Assessment		Hub: ADHD Medication	
Total Caseload	890 ↓	Total Caseload	3608 ↓	Total Caseload	3342 ↑
Screening				Awaiting ADHD Med Initiation	939 ↑
Awaiting AoN Screening	294 ↓			<i>Longest waiting 1yr 11 Weeks (3 outliers)</i>	
				NMP Less Complex Med Review	~ 1827 *
ASD	92 ↓	ASD	1826 ↓	Doctors Complex Med Review	180 ↑
		<i>Longest waiting: 2yrs 41 weeks</i>			
ADHD	122 ↓	ADHD	906 ↑	ASPH Contract (West ADHD Med Review)	396 ↓
		<i>Longest waiting: 2yrs 8 weeks</i>			
ASD/ADHD	215 ↓	ASD/ADHD	876 ↑		
		<i>Longest waiting: 2yrs 39 weeks</i>			

Support

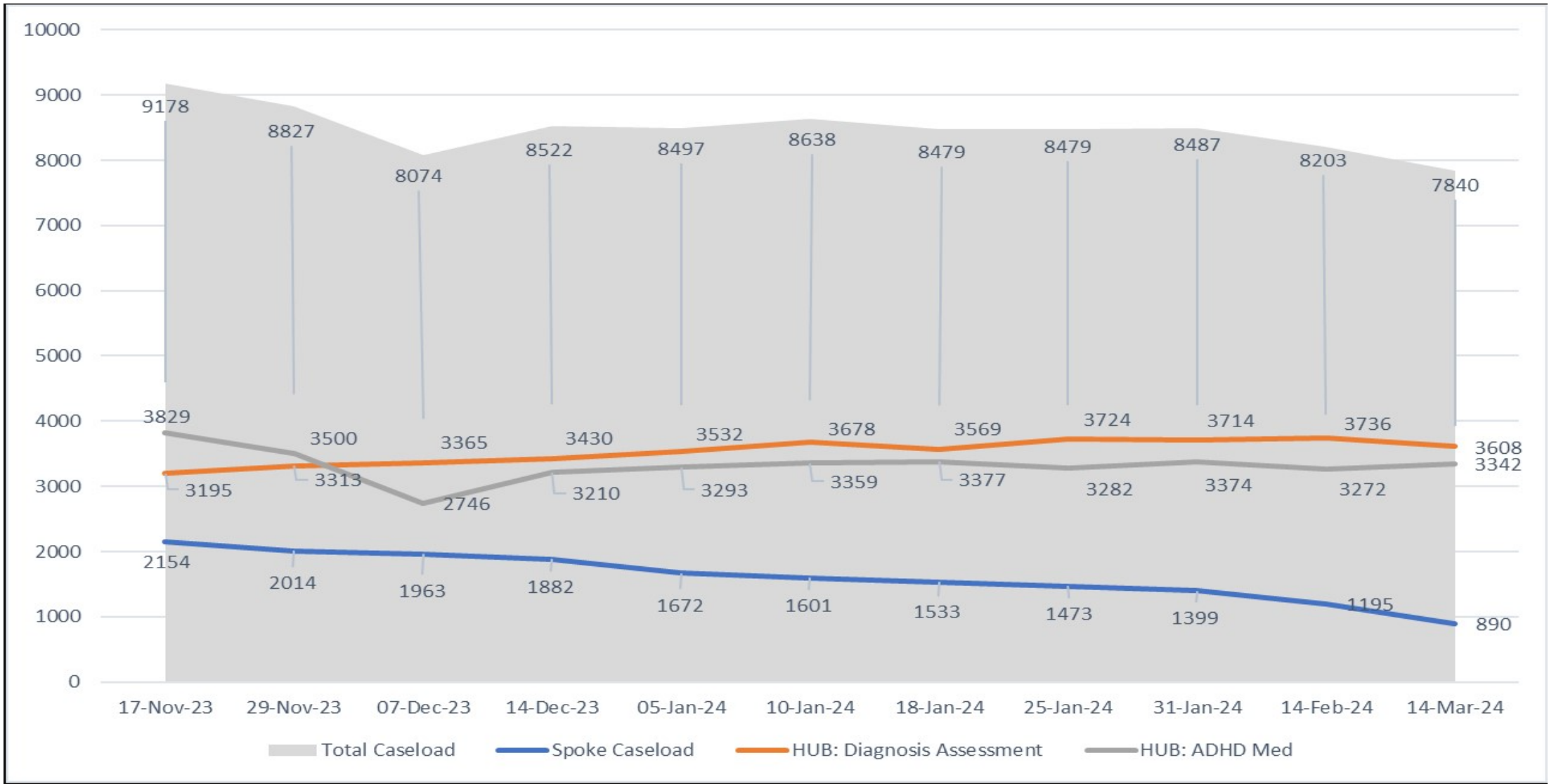
Consultation: 54
Parent course (Navigating the Maze) 111
School observation: 2

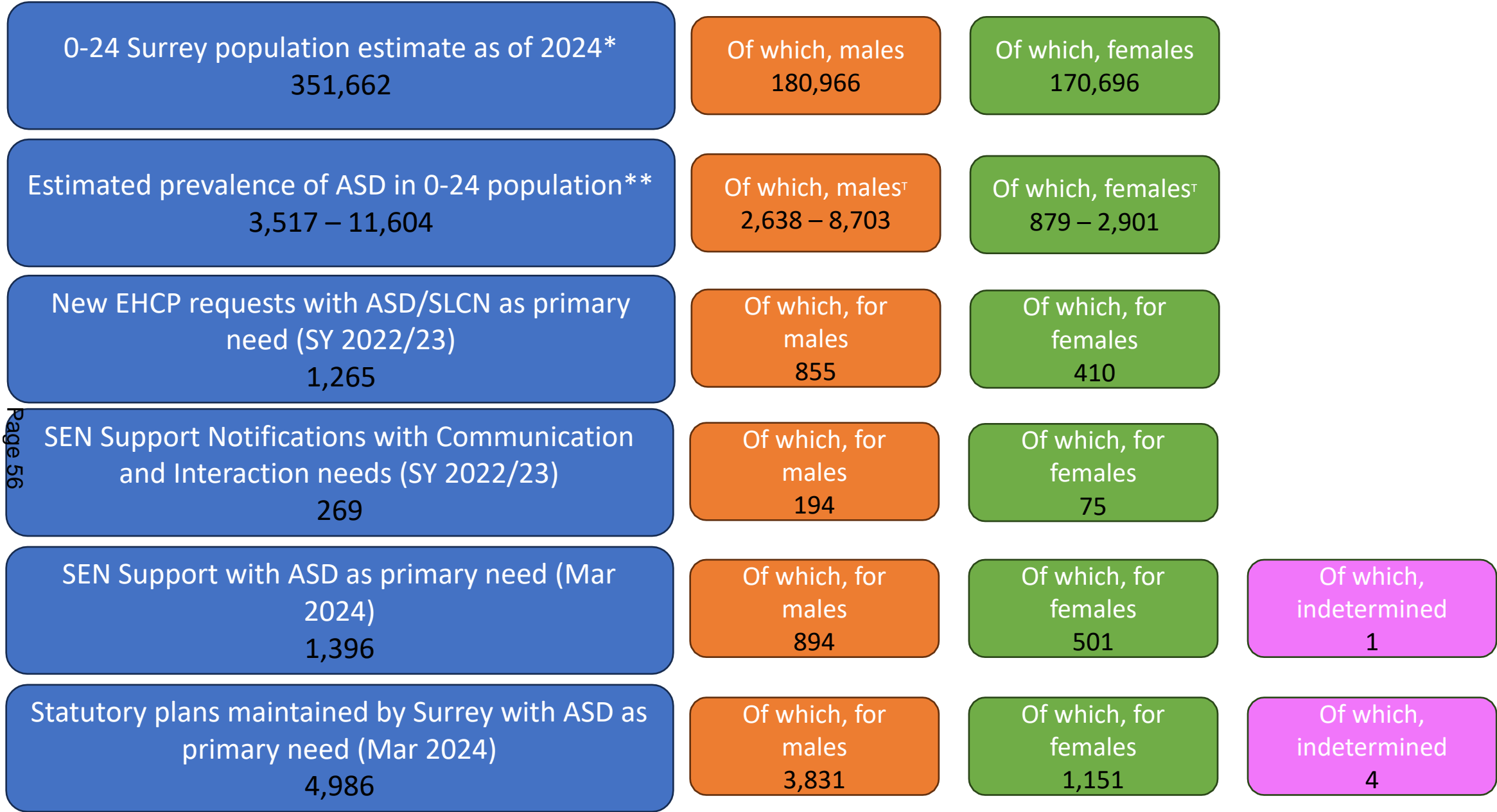
Psicon have commenced contract of 1001 ASD and 250 dual assessments within these numbers

Total Caseload: 7840

* Noted teams have been adding to NMP caseload incorrectly - team resolving, therefore this is an estimate

CYPs ND Trend Data during BCP : 14th March 24





*[Surrey-I population projections](#)

** UK Prevalence of autism is estimated to be between 1% (source: [The national strategy for autistic children, young people and adults: 2021 to 2026](#)) and 3.2-3.3% in individuals aged 10-17 without a co-occurring learning disability (Source: [NHS experimental statistics](#), 2020-21).

^T [Beyond Autism](#) state that ASD is three times more prevalent in boys than in girls

Mindworks Outcomes Summary Report

Mindworks Surrey Outcomes:

Statement:
Reporting is taking place with agreed MDS for both GBO and ESQ with operational implementation plan in place with agreed actions. .

- Goals:**
- To continue to demonstrate distance travelled and SDM with GBO.
 - To be able to demonstrate quarterly improvements of meaningful change.
 - To understand alliance wide CYPF experience of services through MDS ESQ.
 - To focus on strategic indicators with agreed preference data.
 - To deliver on 6-month implementation plan as an alliance.

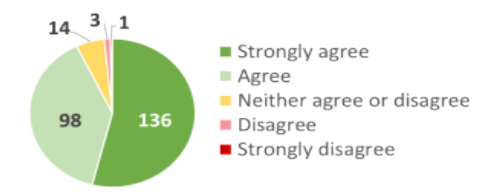
GBO	QUARTER 4		QUARTER 1		QUARTER 2		QUARTER 3	
	Number (* cases out of * cases)	%	Number (* cases out of * cases)	%	Number (* cases out of * cases)	%	Number (* cases out of * cases)	%
The number and % of discharged referrals with paired outcomes that show an improvement in all their goals compared to target. Contractual Target: 70%	791 out of 1056	74.9	639 out of 808	79	610 out of 777	78.5	737 out of 876	84
The number and % of discharged referrals, with paired outcomes by change score. 1. Meaningful Change 2. Improvement 3. No Change 4. Deterioration	487 out of 1056	46.2	436 out of 808	54	360 out of 777	46.3	496 out of 876	57
	302 out of 1056	28.6	203 out of 808	25	250 out of 777	32.2	256 out of 876	29
	155 out of 1056	14.7	95 out of 808	11.8	123 out of 777	15.8	91 out of 876	10
	109 out of 1056	10.3	74 out of 808	9.2	44 out of 777	5.7	33 out of 876	4
The number and % of discharged referrals with at least one paired outcomes. CQUIN Target: 50%	1056 out of 6255 discharges	16.9	808 cases out of 6954 discharges	11.6	777 cases out of 2715 discharges	28.6	876 out of ~1900~ discharges	~45-50~
Average length of referral with paired scores.	8 weeks	-	9 weeks	-	8 weeks	-	5 weeks	-

ESQ for Q3.

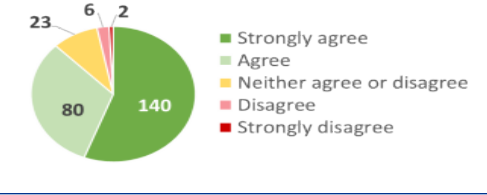
Did you agree goals to work towards -



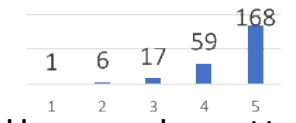
I understood the information given to me -



The support I received met my needs -



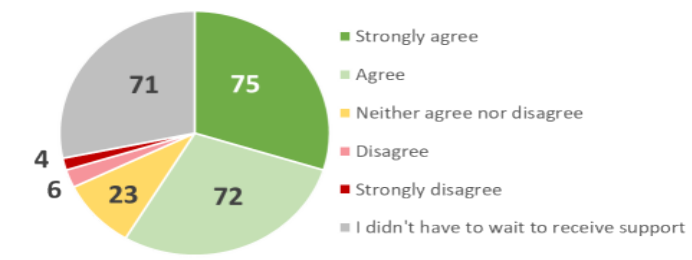
Please rate your overall experience of support - 4.59 / 5



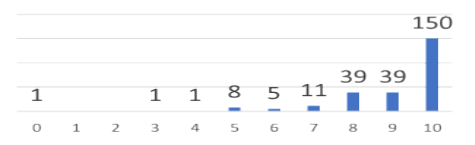
I would recommend support to a friend - 4.55 / 5



I felt supported while waiting for support:



I felt that the things about my wellbeing that matter most to me and my family were listened to - 9.07/10



Future developments: There is a need to report outcomes from a THRIVE perspective as the systemwide delivery framework.

- Develop and agree MDS template within quality sub-group.
- Review and map current reporting taking place.
- Agree with commissioners and partners MDS for THRIVE like ways of working.
- Agree reporting timelines across the alliance.